

Image-Pro[®] AI

for Materials

AI-Powered Image Analysis Software for Research Microscopy

A trusted solution by electron microscope users

- ✓ Supports 2D images generated by high-res field emission and variable pressure microscopes.
- ✓ Supports 3D images generated by Ion and High kV Transmission microscopes.
- ✓ Enables an end-to-end solution for all EM customers.
- ✓ Works with images from nearly all major EM manufacturers.
- ✓ Provides integrated connection with newer Hitachi systems.

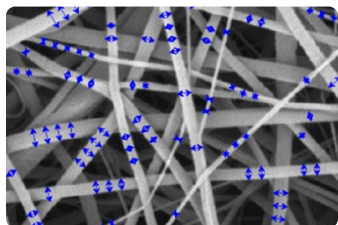
Efficient AI-powered analysis

Designed specifically for analysts that need rapid, trusted results. Image-Pro organizes your analysis routines into a few easy steps and leverages pre-trained deep learning networks to segment and measure your data accurately at scale.

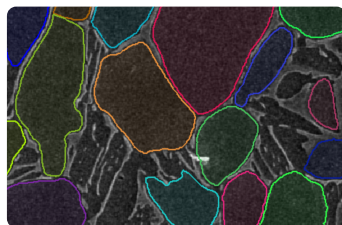


Pre-trained solutions make analysis easy

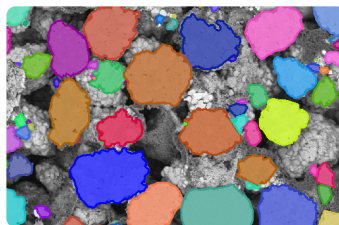
Combine Pre-trained CNN Models and workflow-specific Analysis Protocols to analyze any materials micro-structure.



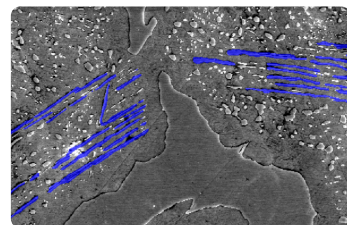
Fiber Thickness (EM)



Grain Size of Titanium
(Ti6Al4V) (EM)



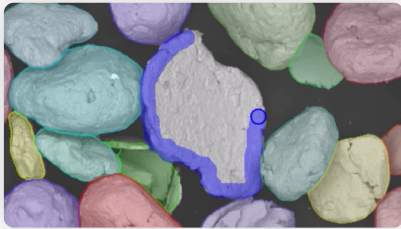
Lithium-Ion Battery
Cathode (EM)



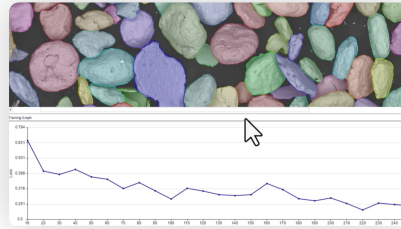
Widmanstatten Patterns (EM)

Fine-tune any Pre-Trained Model for your image

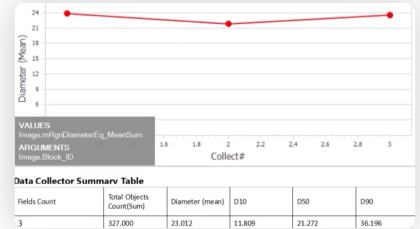
When a model misses a few objects of interest, simple "human-in-the-loop" training can be used.



Label your objects



Train a model



Report data



Superior outline accuracy

Even the most complicated edges can be traced with high quality. AI Models work similar to the human brain, finding objects undeterred by dim, complex edges.



User-friendly operation

AI Deep Learning Segmentation requires minimal input to operate efficiently. Simple controls, limited options, and fast prediction results.



Secure & confidential

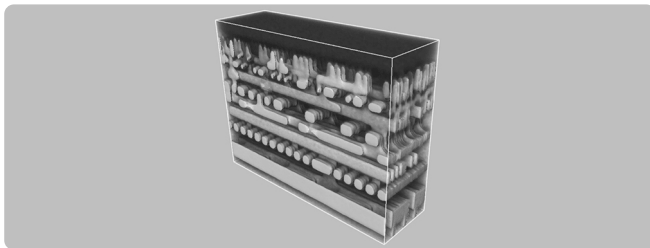
No uploading or downloading required. Save time and avoid sharing your data on unsecure company servers. All operations are on-device.



Protocol-ready

Integrate Deep Learning Segmentation accuracy into an automated workflow by saving an Analysis Protocol with a custom or pre-trained model.

Add-on functionality



3D Analysis & Visualization



Success Plans for Peace-of-Mind

TRUSTED BY COMPANIES AROUND THE WORLD



Honeywell



ExxonMobil



Mercedes-Benz



WestRock

Like what you see?

Schedule a demo with an imaging expert.

