

# Image-Pro®

## Analysis Protocols

Delightfully Efficient Image Analytics

### Protocols make analysis standardized

Remove the variability of results between users or runs with a consistent repeatable process.



#### Guided steps

Analysis protocols make every workflow straight-forward. Three predictable steps take you from images to reproducible answers in no time.



#### AI-integrated

AI Segmentation is available as an option for every Analysis Protocol and can make significant difference in outline accuracy for many images.



#### Batch-ready

All Analysis Protocols are ready to handle multi-image sets or folders with loose images, rapidly applying the analysis steps to every image.



#### Instant reports

Tailored reports are ready to be populated and customized for all Protocols. Simply check a box in the last step to automatically generate.

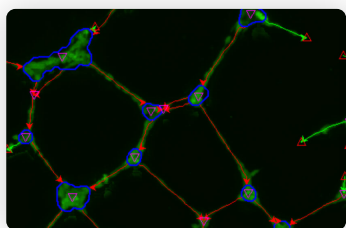
### Consistent results every time

Increase the reliability of your data using a growing library of standardized workflows that feel like they were designed just for you.

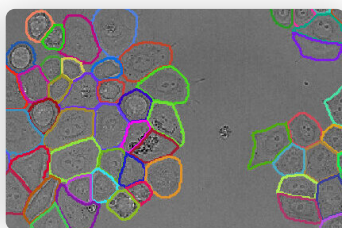


### Analysis Protocols for your application

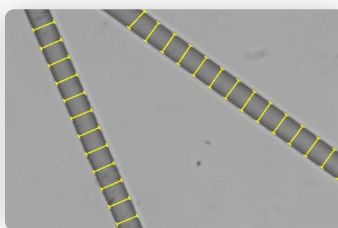
Combine a simplified workflow, AI-Powered segmentation, Machine Learning Classification and robust data analytics into intuitive image analysis.



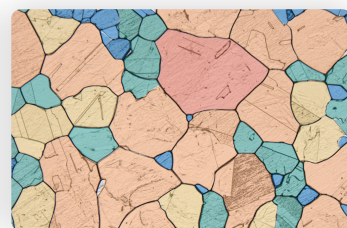
Angiogenesis (Tube Formation)



Cell Count (Label-Free)



Fiber Thickness



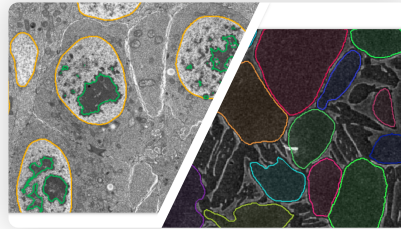
Grain Size (ASTM E112 Segmentation Method)

# Straight-forward workflow

Three predictable steps take you from images to reproducible answers in no time.



Configure classes



Segment and classify



Report data

## Multi-Channel by design

Analyze relationships between and across multiple channels, wells/sites, and regions seeding the results of one channel with those of another.

## Customizable across similar routines

Adjust settings and then save new versions of any Protocol to create your own customized Protocol. Custom name your channels, segmentations, and results.

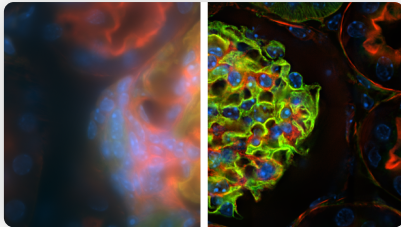
## Fast analysis in parallel

Multi-threaded processing runs analysis for multiple images in parallel across all available CPU Cores and does so without opening the images, speeding up the analysis.

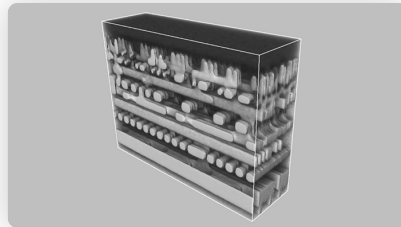
## Relevant data at your fingertips

Quick access to powerful relationship data in Data Collector tables, graphs, charts, and custom reports auto-generated for each Protocol that is synced to the image overlays.

## Add-on functionality



AutoQuant Deconvolution



3D Analysis & Visualization



Success Plans for Peace-of-Mind

TRUSTED BY COMPANIES AROUND THE WORLD



## Like what you see?

Schedule a demo with an imaging expert.

